

BioFlux™ 1000

Automated workstation for live cell analysis under shear flow

A complete solution for high content screening under shear flow:

Higher biological relevance:

BioFlux 1000 provides controllable shear flow for high content screening experiments. Bridges the gap between *in vitro* and *in vivo* screening and research.

Fully-integrated microscopy:

BioFlux 1000 comes complete with all the components necessary for high resolution microscopy imaging in brightfield, phase and fluorescence. Offers powerful features for high content screening, including autofocus, automated stage and shear flow control.

Convenience of single point control:

All hardware and analysis controls run through the BioFlux Montage Software. Makes it simple and easy to coordinate all of your screening experiments and analysis from a single user interface.

Increased throughput:

Runs up to 96 shear flow assays in parallel, making it simple to screen hundreds of data points per day. Automated stage and image acquisition provide rapid scanning of experimental channels.

Unattended operation:

Simple to use experiment scheduler allows unattended imaging and overnight assays for kinetic and time-lapse high content screens.

The BioFlux 1000 provides a high content screening platform for running physiologically-relevant shear flow assays. The fully-integrated and automated system delivers high resolution microscopy data with the ultimate in throughput, convenience and flexibility.

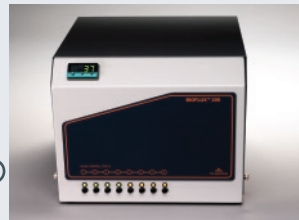
The BioFlux 1000 System incorporates Fluxion's proprietary Well Plate Microfluidic™ technology with an automated microscopy system to enable high throughput shear flow assays. It offers the biological relevance of a laminar flow cell, with the throughput and convenience of standard microplates. The fully-integrated system comes complete with all the tools necessary to generate your data quickly and reliably.

BioFlux 1000 System Overview:

BioFlux 1000 is a fully-integrated high content screening platform for bridging the gap between *in vitro* and *in vivo* experiments. It integrates a high performance microscopy workstation with the BioFlux electropneumatic pumping system for controlling shear flow. The BioFlux Montage software offers single point control for designing experiments, acquiring images and analyzing data.

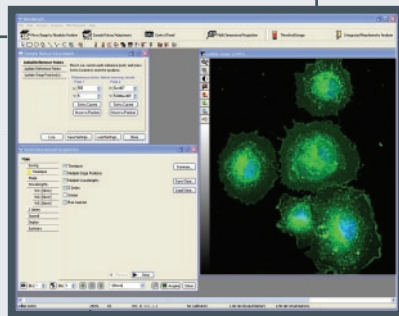


Customized automated stage enables fast scanning of BioFlux plates with industry-leading speed, precision and reliability. Stage positions for BioFlux plates come pre-configured for plug and play operation.



BioFlux Controller delivers programmable shear flow to BioFlux plates. Covers a wide shear range (0-200 dyne/cm²) to address many physiological applications.

Automated microscopy station provides high performance imaging in brightfield, phase and fluorescence. Cooled CCD camera provides high resolution, low noise data acquisition.



BioFlux Montage Software delivers single point control for all system components. Design experiments, acquire images, and analyze data all from one intuitive software package.



FLUXION

384 Oyster Point Blvd., #6
South San Francisco, CA 94080

T: 650.241.4777

F: 650.873.3665

TOLL FREE: 866.266.8380

www.fluxionbio.com



Product Specifications

BioFlux 1000 Controller:

Shear flow range: 0.5-100 dyne/cm²
Temperature Control: ambient to 50°C
Dimensions: 12" (W) X 13" (L) X 9" (H)
 30cm (W) X 33cm² (L) X 22cm (H)

Inverted Microscope:

Illumination: 12V 100W
Objectives: 4X BF, 10X 20X 40X PH

CCD Camera:

Imaging array: 1392 x 1040, 6.45µm pixels, 12-bit digitization @ 20MHz
Quantum efficiency: 60%
Cooling: 0°C

Automated Stage:

XY Travel: 4" x 3" (114 x 76mm)
Repeatability: < 1µm
Resolution: 0.01µm
Sample holder: customized interface for BioFlux plates
Focusing: automated Z-drive focus

Automated Fluorescence:

Lamp: 200W metal halide
Filters: 6-position integrated filter wheel, FITC, TRITC, DAPI included (others available), 55msec switch time

Automated brightfield shutter

BioFlux 1000 Software:

Drivers: BioFlux controller, CCD camera, stage, focus, filter wheel changers
Modules: BioFlux control, multi-dimensional acquisition, digital auto focus, image analysis

Desktop Computer:

Processor: Intel Quad Core Xeon 2.5GHz
Operating system: Windows XP
Memory: 2GB, 250GB HD



FLUXION

384 Oyster Point Blvd., #6
 South San Francisco, CA 94080

T: 650.241.4777
F: 650.873.3665
TOLL FREE: 866.266.8380
www.fluxionbio.com

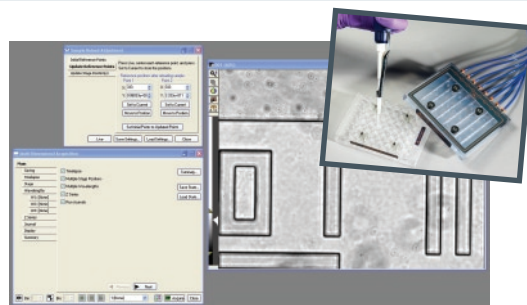
1031-02 7/13/09

An automated workflow designed for throughput and convenience

BioFlux 1000 offers a simplified approach to running shear flow assays. The intuitive and easy to use software package provides complete control over shear flow, image acquisition and data analysis.

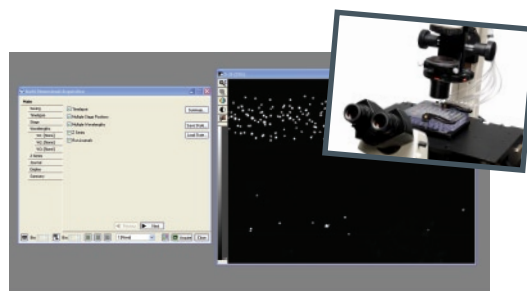
Setup

- Load cells/reagents in to BioFlux plate
- Pick two calibration points
- Select acquisition parameters



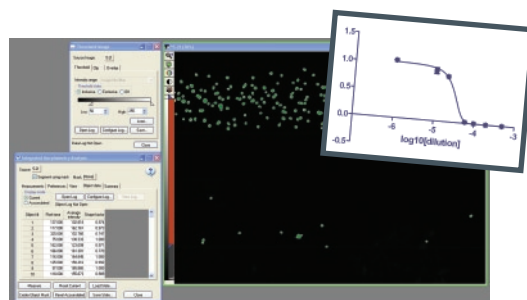
Run

- Select flow protocol
- Acquire images using:
 - Time lapse or endpoint
 - Brightfield, phase or fluorescence



Analyze

- Autoselect and count cells
- Full morphology profile
- Numerous analysis modules available
 - Live/dead
 - Cell tracking
 - Nuclei countingand more



Typical Applications:

- Leukocyte adhesion compound screening
- Platelet adhesion assays
- Anti-microbial compound screening
- Stem cell assays for kinetics and differentiation
- Pharmacology / dose response assays
- Life cycle analysis (mitosis, apoptosis, etc.)

Ordering Information:

To request a quote or to place an order:
sales@fluxionbio.com
 (866) 266-8380 Toll Free
 (650) 241-4777 Main
 (650) 873-3665 FAX
www.fluxionbio.com

© 2009 Fluxion Biosciences, Inc. All rights reserved. "BioFlux" and "BioFlux Montage" are trademarks of Fluxion Biosciences, Inc.