

Time-Saver™ Qualified Restriction Enzymes

Over 120 of our enzymes are Time-Saver qualified and will digest 1 µg of DNA in 5 minutes. Look for the Time-Saver icon on our web site.

At NEB, enzyme production is linked to basic research in the cloning and overexpression of restriction-modification systems. This focus allows us to provide extremely pure enzymes at concentrations that deliver more flexibility for your experimental design.

Whether you are quickly screening large numbers of clones, or setting up overnight digests, you will benefit from the high quality of our enzymes. Typically, a restriction digest involves the incubation of 1 µl of enzyme with 1 µg of purified DNA in a final volume of 50 µl for 1 hour. However, to speed up the screening process, choose one of NEB's enzymes that are Time-Saver qualified. These enzymes will digest 1 µg of DNA in 5 minutes using 1 µl of enzyme under recommended reaction conditions. Unlike other suppliers, there is no special formulation, change in concentration or need to buy more expensive new lines of enzymes to achieve digestion in 5 minutes. In fact, 59% of our enzymes will digest 1 µg of DNA in 5 minutes, while 83% will fully digest in 15 minutes (see table). That means >180 of our restriction enzymes have the power to get the job done fast.

Also, since all of our enzymes are rigorously tested for nuclease contamination, you can safely set up digests for long periods of time without any degradation of your sample. Only NEB can offer you enzymes with power and purity — the power to digest in 5 minutes and the purity to withstand overnight digestions with no loss of sample.

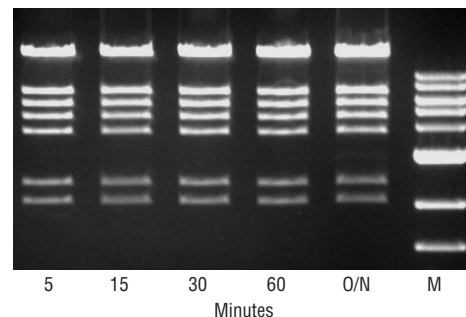
CLONING & MAPPING

DNA AMPLIFICATION & PCR

RNA ANALYSIS

PROTEIN EXPRESSION & ANALYSIS

GENE EXPRESSION & CELLULAR ANALYSIS



Power and purity of Time-Saver qualified enzymes: 1 µl of *SalI* digests 1 µg of DNA in 5 minutes with no indication of nuclease contamination in longer digests or overnight (O/N) samples. Marker (M) is the 1 kb DNA Ladder (NEB #N3232).

Enzyme	5 Minutes	15 Minutes
AatII	■	●
AccI	■	●
Acc65I	■	●
AcII	●	
AclI	■	●
AcuI	■	●
AflIII	■	●
AgeI	■	●
AhdI	■	●
AluI	■	●
AlwI	■	●
AlwNI	●	
ApaI	■	●
ApaLI	■	●
ApeKI	■	●
ApoI	■	●
AscI	■	●
AseI	■	●
AsiSI	■	●
AvaI	■	●
AvaII	■	●
AvrII	■	●
BaeI		●
BaeGI	●	
BamHI	■	●
BamHI-HF	■	●
BanII	●	

Enzyme	5 Minutes	15 Minutes
BbsI		●
BbvI	■	●
BbvCI	■	●
BccI	■	●
BceAI		●
BciVI	■	●
BclI	■	●
Bfal		●
BfuAI	●	
BglI	■	●
BglII	■	●
BlpI	■	●
BmgBI	●	
BmrI	■	●
BpmI		●
BsaAI	■	●
BsaBI	●	
BsaHI		●
BsaWI		●
BsaXI	●	
BseRI	■	●
BsgI	●	
BsiEI	●	
BsiWI	■	●
BslI	■	●
BsmI	■	●
BsmAI	■	●

Enzyme	5 Minutes	15 Minutes
BsmBI	■	●
BsmFI	■	●
BsoBI	■	●
BspI286I	●	
BspCNI		●
BspEI	■	●
BspHI	■	●
BspQI	■	●
BsrI		
BsrBI	●	
BsrDI		●
BsrFI	■	●
BsrGI		●
BssHII	■	●
BssKI	■	●
BstBI	●	
BstEII	■	●
BstNI	●	
BstUI	●	
BstXI	■	●
BstYI	■	●
BstZ17I	●	
Bsu36I		●
BtgI	■	●
BtsI	■	●
BtsCI	■	●
Cac8I		●

Enzyme	5 Minutes	15 Minutes
ClaI	■	●
CspCI	■	●
CviAII	■	●
CviKI-1	■	●
CviQI	■	●
DdeI	■	●
DpnI	■	●
DpnII	■	●
DraI	■	●
DraIII	■	●
DrdI		●
EagI	■	●
EagI-HF	■	●
EarI	■	●
EcoNI	●	
EcoO109I	■	●
EcoP15I	■	●
EcoRI	■	●
EcoRI-HF	■	●
EcoRV	■	●
EcoRV-HF	■	●
Fnu4HI	■	●
FokI	■	●
FseI	■	●
FspI	■	●
HaeII	■	●
HaeIII	■	●

See other side for more Time-Saver™ Qualified Restriction Enzymes

■ = Recombinant

Orange indicates frequently used enzymes.

RESTRICTION ENZYMES



Enzyme	5 Minutes	15 Minutes
HgaI	•	•
HhaI	•	•
HincII	•	•
HindIII	•	•
HinfI	•	•
HinPII	•	•
HpaI	•	•
HpaII	•	•
HphI	•	•
Hpy166II	•	•
Hpy188I	•	•
HpyAV	•	•
HpyCH4IV	•	•
HpyCH4V	•	•
KpnI	•	•
MboI	•	•
MboII	•	•
MfeI	•	•
MfeI-HF	•	•
MluI	•	•
MlyI	•	•
MmeI	•	•
MnlI	•	•
MseI	•	•
MslI	•	•
MspI	•	•
MspAII	•	•

Enzyme	5 Minutes	15 Minutes
MwoI	•	•
NciI	•	•
NcoI	•	•
NcoI-HF	•	•
NdeI	•	•
NgoMIV	•	•
NheI	•	•
NheI-HF	•	•
NlaIII	•	•
NmeAIII	•	•
NotI	•	•
NotI-HF	•	•
NruI	•	•
NsiI	•	•
NspI	•	•
Nt.BspQI	•	•
PacI	•	•
PaeR7I	•	•
PflfI	•	•
PflMI	•	•
PmeI	•	•
PmlI	•	•
PpuMI	•	•
PshAI	•	•
PstI	•	•
PvuI	•	•
PvuII	•	•

Enzyme	5 Minutes	15 Minutes
PvuII-HF	•	•
RsaI	•	•
SacI	•	•
SacI-HF	•	•
SacII	•	•
Sall	•	•
Sall-HF	•	•
SapI	•	•
SbfI	•	•
SbfI-HF	•	•
ScaI	•	•
ScaI-HF	•	•
ScrFI	•	•
SfiI	•	•
SfoI	•	•
SmaI	•	•
SnaBI	•	•
SpeI	•	•
SphI	•	•
SphI-HF	•	•
SspI	•	•
SspI-HF	•	•
StuI	•	•
StyI	•	•
StyD4I	•	•
SwaI	•	•
TaqI	•	•

Enzyme	5 Minutes	15 Minutes
TfiI	•	•
TseI	•	•
Tsp509I	•	•
TspMI	•	•
TspRI	•	•
Tth111I	•	•
XbaI	•	•
XcmI	•	•
XhoI	•	•
XmaI	•	•
XmnI	•	•

• = Recombinant

Orange indicates frequently used enzymes.



www.neb.com

New England Biolabs, Inc., 240 County Road, Ipswich, MA 01938-2723

Telephone: (978) 927-5054 Toll Free: (USA Orders) 1-800-632-5227 Toll Free: (USA Tech) 1-800-632-7799 Fax: (978) 921-1350 e-mail: info@neb.com